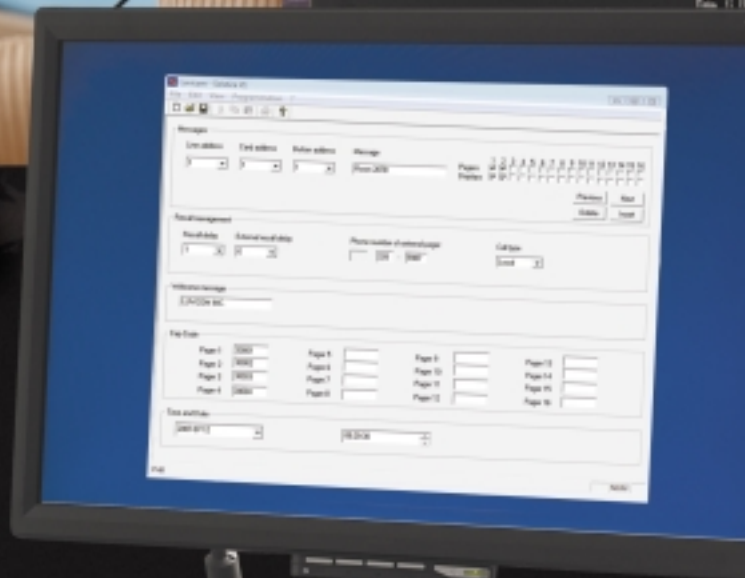
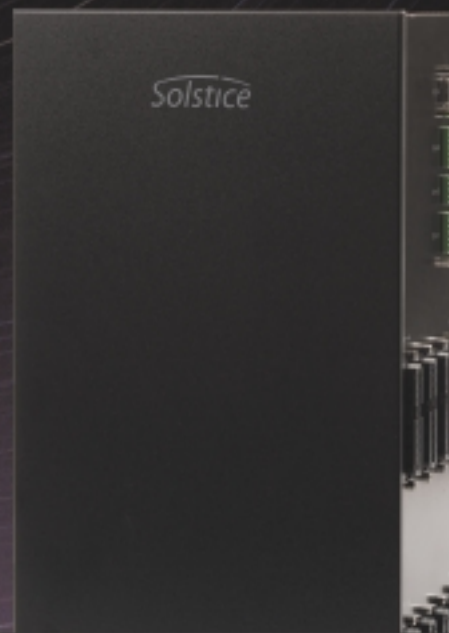


Solstice

*Nurse call system for
senior's residences and
health care facilities*



 **LUVICOM**

Solstice

The Solstice system is latest in control and monitoring tools designed for retirement homes and health care facilities.



Top-of-the-line monitoring system

STATE-OF-THE ART CONTROL CENTER

In keeping with Luvicom's tradition of excellence, Solstice's concept combines reliability, ease of operation and the possibility of future expansion at low cost.

- **Fast**
Broadcasting of calls to local pagers through a private transmitter.
- **Structured**
Simplified architecture through the use of plug-in circuits and slave units on a single pair cable.
- **Reliable**
Call points monitoring and audible signal in case of breakdown.
- **Powerful**
Calls managed by association and escalation.
- **Flexible**
Transmission of calls on analog and numeric displays.



Archiving software

- Actions tracked and stored for a number of years.
- Past events easily retrieved.
- Windows 98 / 2000 / XP / Vista compatible.



Alphanumeric pager

- Clear messages.
- Immediate response to calls.
- Battery level indicator.
- Out-of-range indicator.

Corridor light

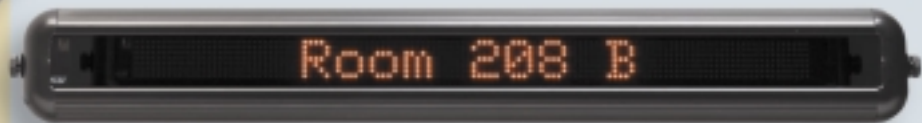
- Visual call indicator.
- Makes nurses' job easier.
- Removable cover.
- 40 to 50-foot visibility.
- Stainless steel 2-gang plate.



Printer

Prints out all actions:

- Easy data archiving.
- Prints in real time.
- Calls, replies, system defects.
- Standard paper roll.



Giant alphanumeric display

- For public areas.
- High visibility LED.
- Wall surface mounting.
- 30 to 40-foot visibility.
- Internal audio warning.



Control station

- Date and time setting.
- Silencer.
- System reset.
- Used with displays.
- White baked enamel steel 1-gang plate.



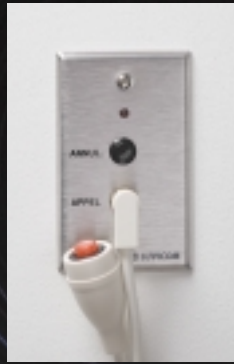
Emergency call station for rooms and toilets

- Sturdy pull cord switch.
- Easy activation.
- 360° traction angle.
- Monitored usage.
- Stainless steel 1-gang plate.



Emergency call station

- Sturdy push button.
- Mechanical status indicator.
- Monitored usage.
- Stainless steel 1-gang plate.



In-room call station

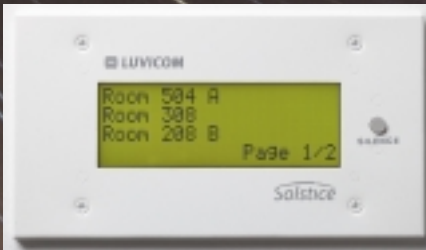
- Plug for call cord.
- Status indicator.
- Cancellation button.
- Monitored usage.
- Stainless steel 1-gang plate.

Solstice

A product designed and manufactured entirely in Quebec!

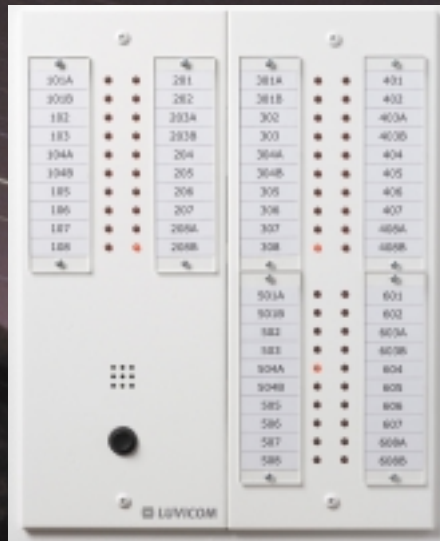
Safety comes first

- For emergency situations where every second counts.
- A reliable guardian constantly monitoring its peripheral devices.
- Ready to react to avoid irreparable injuries.



Alphanumeric display

- For offices.
- Back-lit liquid crystals.
- Wall flush mounting.
- 15 to 20-foot visibility.
- Internal audio warning.
- Silencer button.
- White baked enamel steel 4-gang plate.



Analog display board

- Indicates the origin of calls.
- Index visible from a distance.
- 20 to 40 LED modules.
- Internal audio warning.
- Signal muting button.
- White baked enamel steel plate.
- Mounted on expandable backboxes.

LUVICOM INC.
 74, de Carillon Street, Quebec (Quebec) G1K 4Z5
 Tel: (418) 524-0717 Fax: (418) 529-5451
 www.luvicom.com
 R.B.Q. licence number: 1890-4698-65